

European Habitat Designations, Flood Risk Schemes & the Habitat Creation Programme

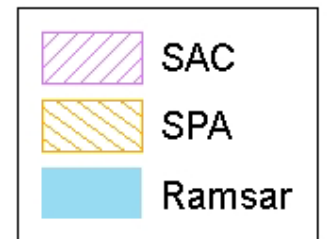
Ruth Jolley

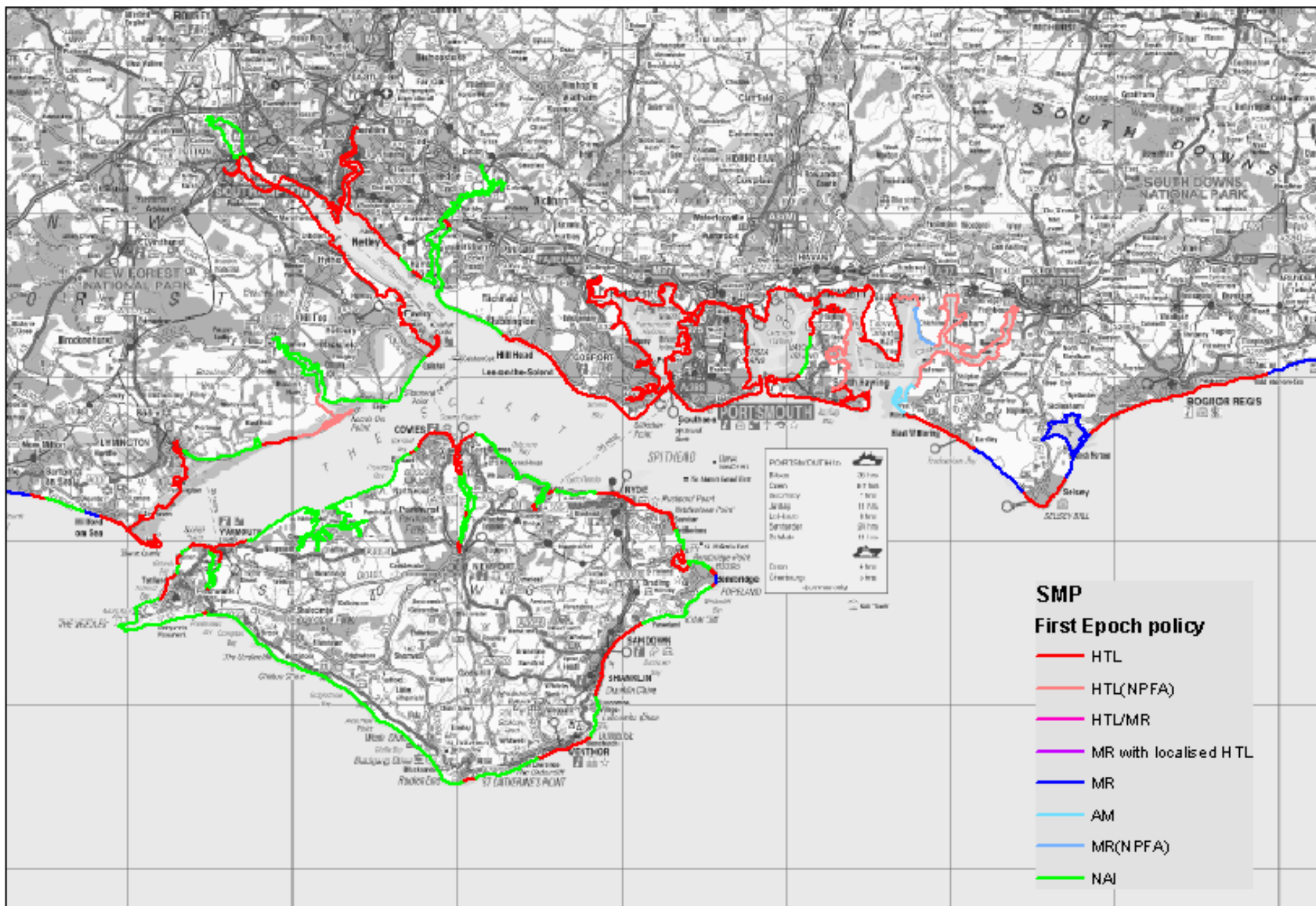
Habitat Creation Programme Manager

Natura 2000 sites in the Solent



280km of defences protecting 25,000 properties & 8000ha land





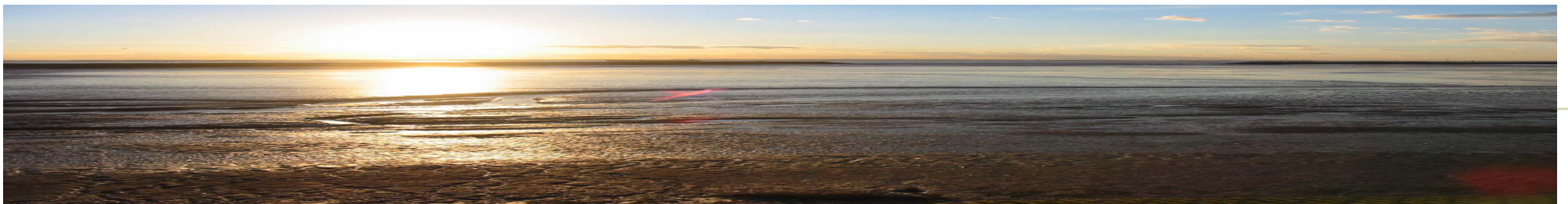
Habitat Creation Programme

- Supports the Flood & Coastal Risk Management Programme
- Defra and Environment Agency Policy - Strategic Proactive Approach
- Ensure compliance with Habitat Regulations
- Open to Local Authorities

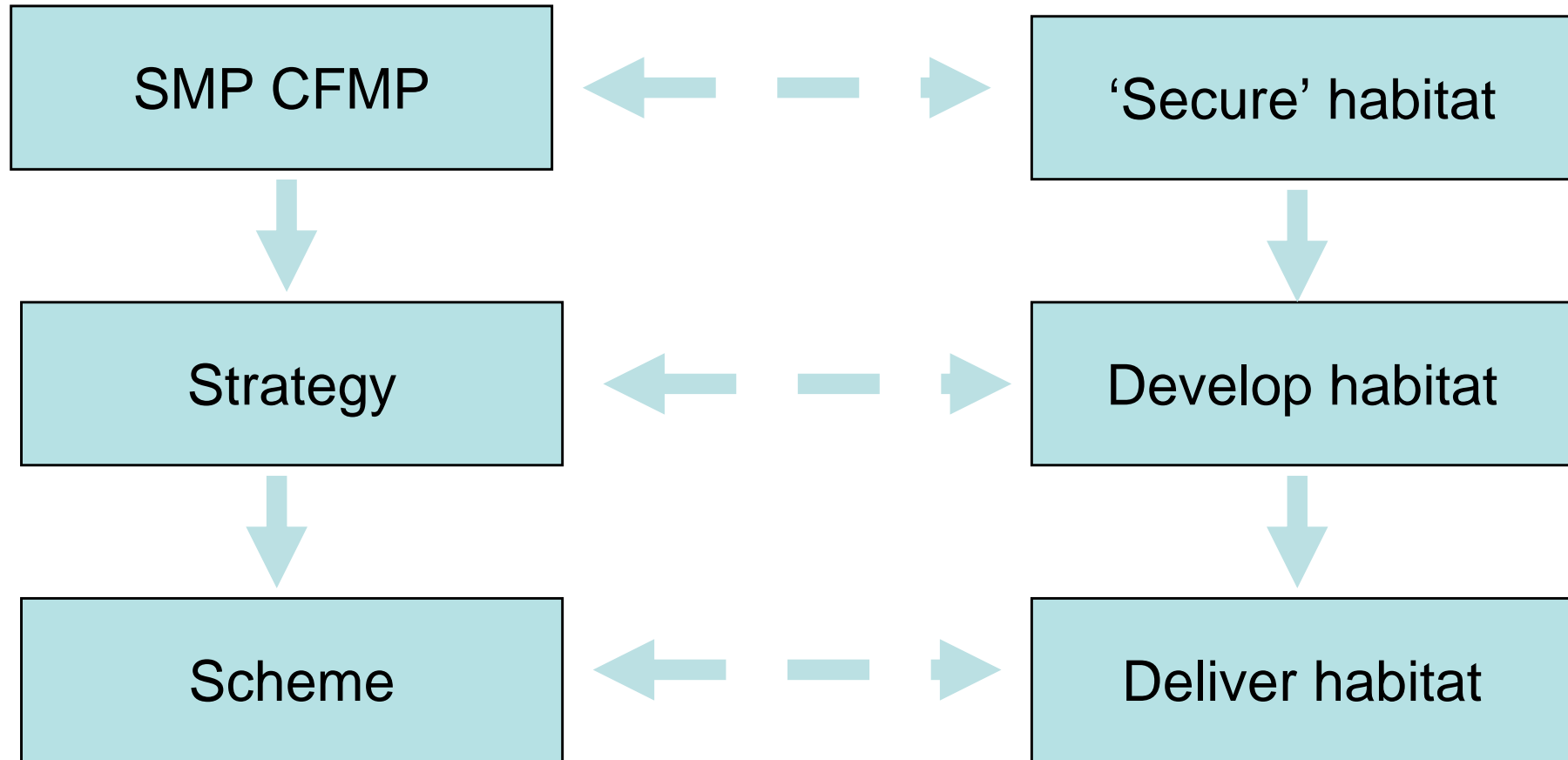


Programme Benefits

- ➔ Flexible approach to meet habitat requirements
- ➔ Create habitat in advance of need
- ➔ Create larger, more ecologically robust sites
- ➔ Seize opportunities as they arise
- ➔ Reduce delays to FCRM schemes
- ➔ Encourages partnership working



Flood Risk Planning & the Habitat Programme



South East Requirements - next 100 years (Natura 2000 compensation)

	Intertidal habitat (saltmarsh & mudflat)	Freshwater habitat (grazing marsh & reedbed)	Vegetated Shingle habitat (Annual & Perennial)
Thames Estuary	900 – 1400 ha*	300 – 1500 ha**	0ha
South Kent	0 ha	0 ha	10ha Perennial 10km Annual
Solent Estuary	608 ha	49 ha	0 ha

*range depends on extent of compensation habitat created in Essex

**range depends on extent of realignments

Compensation Habitat Requirements Solent & Isle of Wight

Habitat	Area (ha)			Total (ha) (cumulative)
	Epoch 1	Epoch 2	Epoch 3	
Saltmarsh	124	148	163	435
Mudflat	12	43	118	173
Freshwater habitat	0	4	0	4
Coastal grazing marsh	0	70	6	76

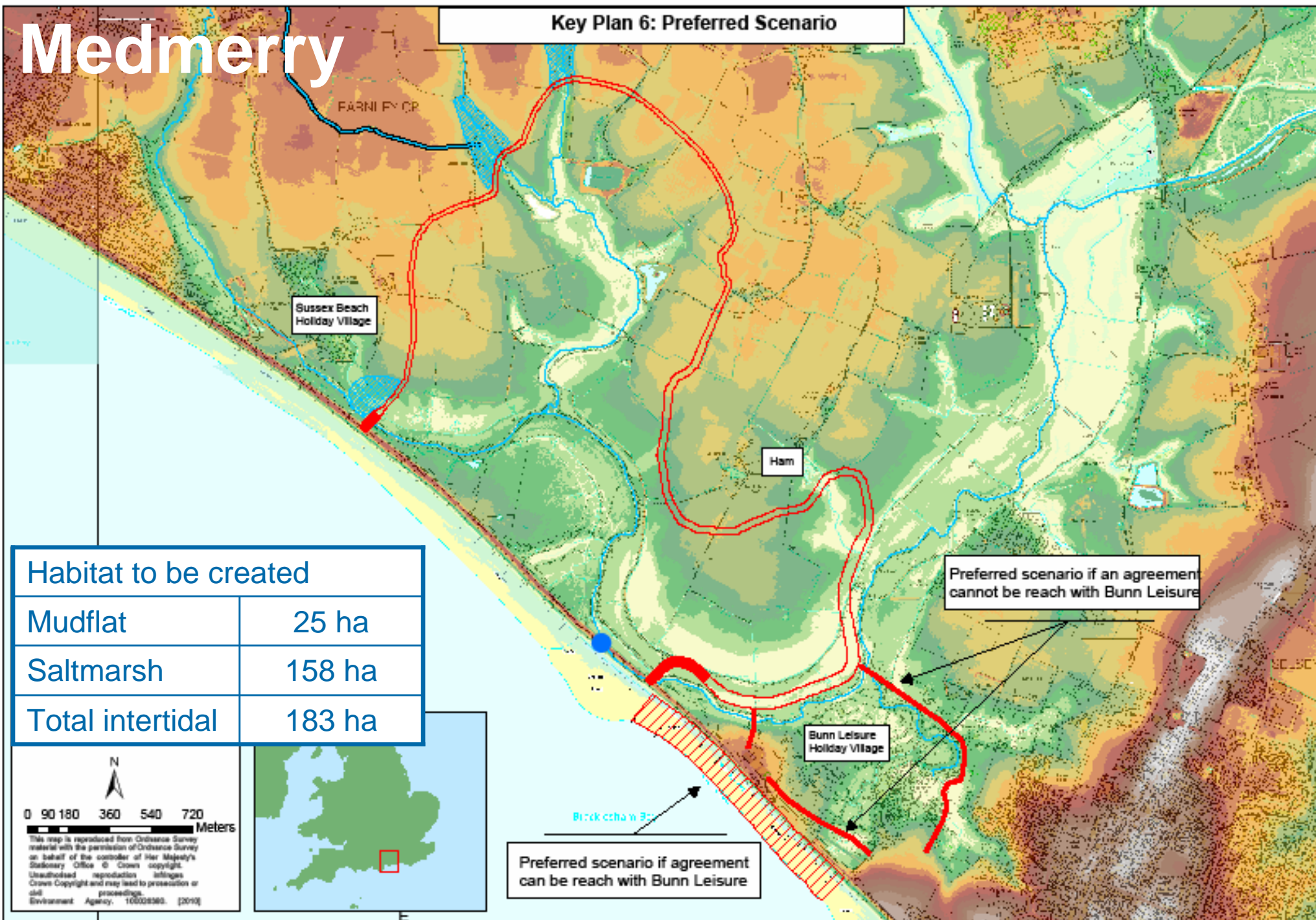
Programme Delivery

- ➔ Medmerry, West Sussex (intertidal)
- ➔ Great Bells Farm, North Kent (freshwater grazing marsh)
- ➔ River Test, Hampshire (grazing marsh)



Medmerry

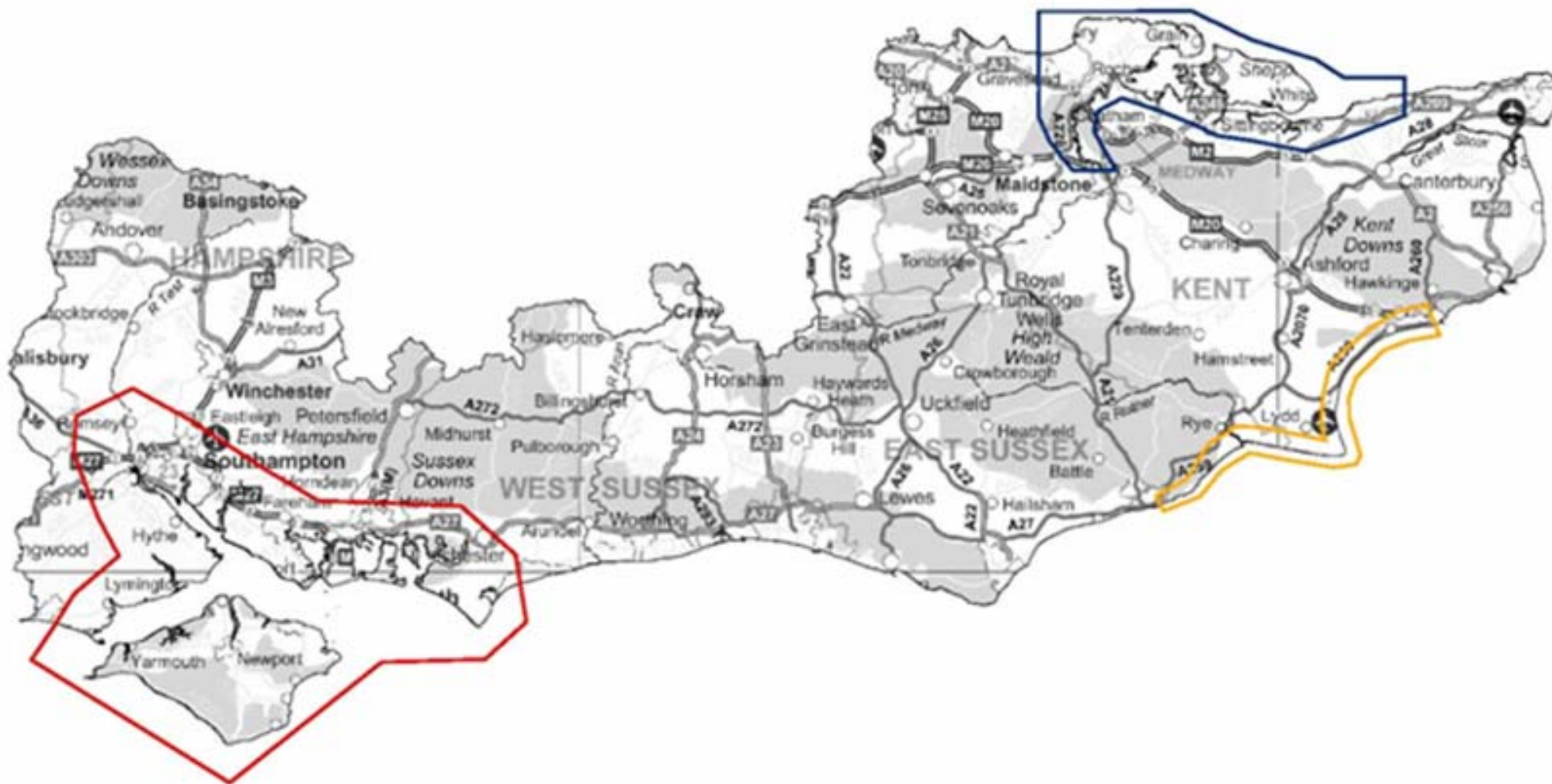
Key Plan 6: Preferred Scenario





Great Bells Farm

Future Opportunities



Working together

Local advocacy with landowners
Improved amenity & access
Green tourism
Use of LA landholdings
LA habitat creation schemes

Funding: FCRM

Higher Level Stewardship