



Professor Roger Moore  
Halcrow

# National Coastal Erosion Risk Mapping

## Briefing

To ensure common understanding of how the new NCERM maps are being produced and what they will look like

# Coastal Erosion – what's at risk

- 113,000 Residential properties
- 9,000 Commercial properties
- 5,000Ha Agricultural land
- £7.7billion Capital value of assets

Source: Defra, 2002



Source: OSS



Source: RM

# Coastal Erosion – A Real Problem

- January 1992



*Happisburgh 1992 (Source: Environment Agency)*

- January 2009

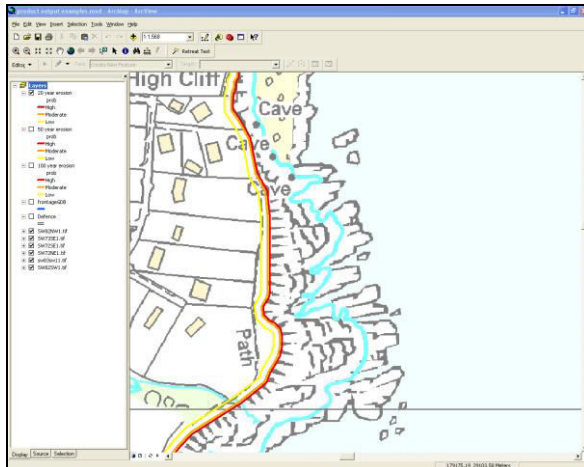


*Happisburgh 2009 (Source: Google Earth™)*

# Ultimate Aims

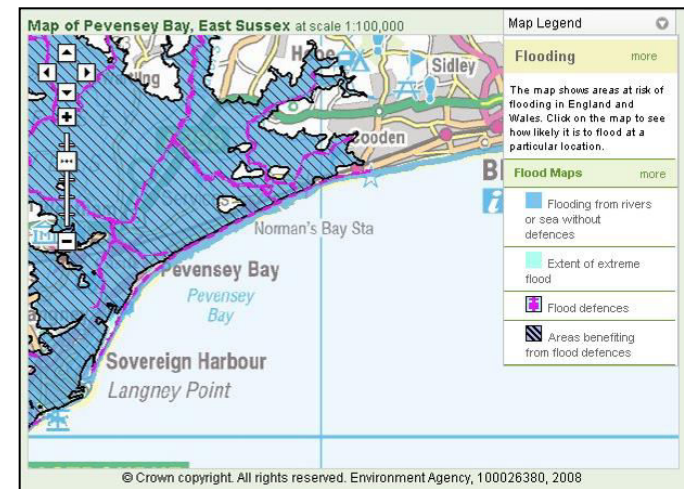
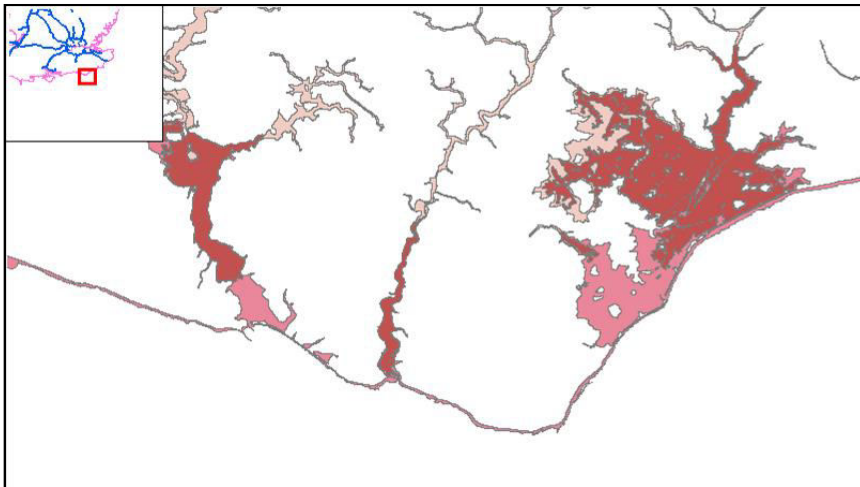
- Making Space for Water - Holistic Approach 4: Risk Mapping
  - “...we will identify appropriate means to develop our coverage in order to model and map the risks from coastal erosion...”
  - “...identify appropriate means of making this information publicly available.”

Source: [www.defra.gov.uk](http://www.defra.gov.uk)



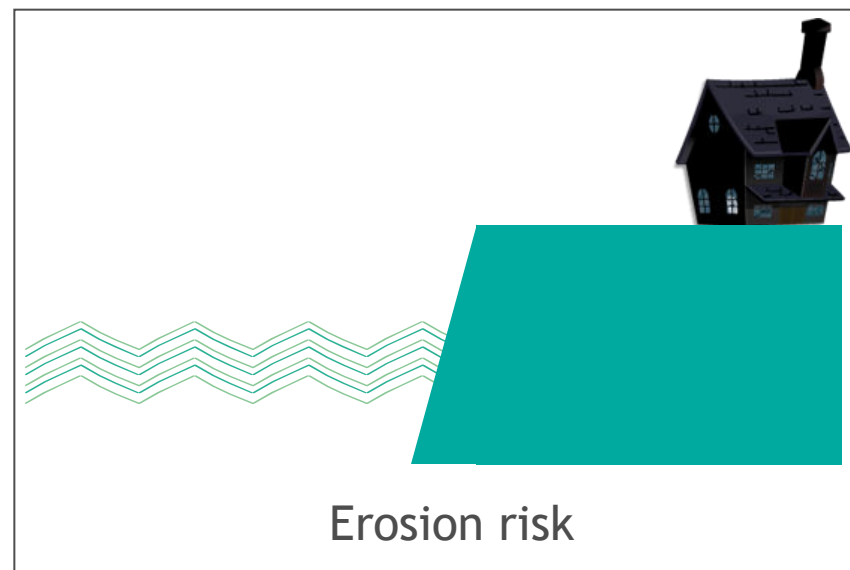
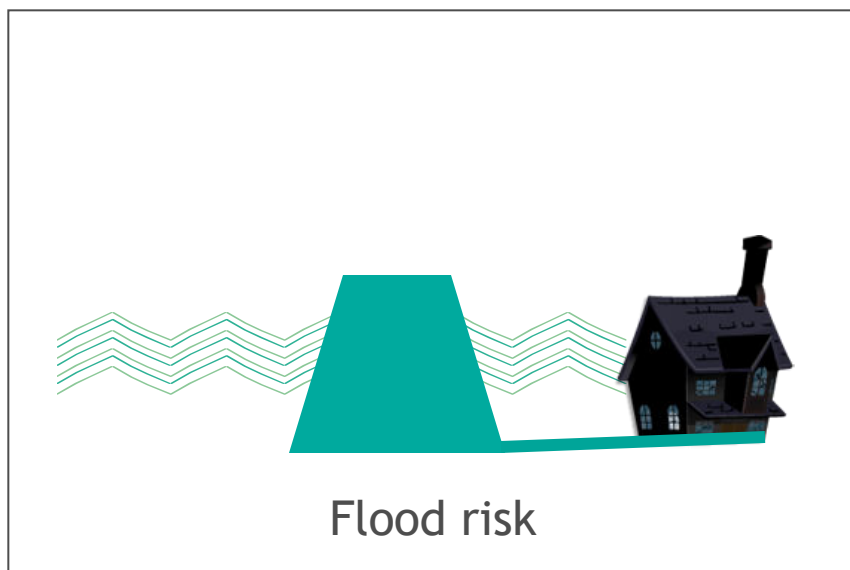
# Key Driver – Links to Existing Flood Maps

- Flood risk from the sea is mapped by the Environment Agency.
- Gaps in its coverage.
- NCERM will cover the coast not at risk from flooding from the sea.
- Complements Flood Maps to provide a complete picture of risk at the coast.



# Key Scoping Statement

- The Environment Agency risk maps will ultimately provide an understanding of the areas and properties at risk from flooding or coastal erosion in England and Wales.
- These areas will be defined by their primary risk to properties, either flooding or coastal erosion.



# Further Guidance – Risk Bands

