

Incident management protocols

Name: Sarah Comely

Job title: Environment Agency Wessex Incident Management Business Partner

Date: January 2015

Overview

- ➔ Background to incidents
- ➔ Civil Contingencies Act
- ➔ Local Resilience Forum
- ➔ Command, Control and Coordination
- ➔ Questions?

**foot and
mouth
2001**

7/7 2005

Ebola, 2014

**Moat /
Bird 2010**

Buncefield 2005

**public
disorder
2011**

**Napoli,
2007**

**Flooding
...2007,
2009,
2013,
2014...**

**severe
winter
weather
2009/2010**

**swine
flu
2009**



**Environment
Agency**

9/11

Icelandic volcano
eruptions

Columbine
1999

Norway 2011

Fukushima
2011

Glasgow, 2014

M5, 2011

SARS
Hong Kong
2002/3



Civil Contingencies Act 2004

- ➔ Repealed historic legislation.
- ➔ Defines Category 1 and 2 Responders.
- ➔ Standardises Emergency Response and Recovery arrangements.
- ➔ Created Local Resilience Fora.

Category 1 Responders

(Statutory duty of civil protection)

- ➔ Police
- ➔ British Transport Police
- ➔ Fire and Rescue Service
- ➔ Ambulance Service
- ➔ Local Authorities
- ➔ NHS England Area Team
- ➔ Public Health England
- ➔ Environment Agency

Seven civil protection duties of the Act

- ➔ Cooperation
- ➔ Information sharing
- ➔ Risk assessment
- ➔ Emergency planning
- ➔ Business continuity management
- ➔ Communicating with the public
- ➔ BC Advice to business (LAs only)

Category 2 Responders

(Limited supporting obligations – cooperate/info share)

- ➔ Utilities (water, sewage, gas and electricity)
- ➔ Telephone service providers
- ➔ Railway operators
- ➔ Airport operators
- ➔ Harbour authorities
- ➔ The Highways Agency
- ➔ The Health and Safety Executive

Other Responders

- ➔ DCLG - Resilience Emergencies Division
- ➔ Military
- ➔ Voluntary Agencies, e.g. Red Cross
- ➔ Animal and Plant Health Agency

Local Resilience Forum

- ➔ Required by the Act
- ➔ Based on police boundaries
- ➔ Principal form of multi agency cooperation for resilience in a local area
- ➔ Not a legal entity and cannot direct its members
- ➔ Responders can nominate representatives

LRF Structure



LRF Outputs

- ➔ Community Risk Register
- ➔ Dynamic Risk Assessment
- ➔ Gap Analysis
- ➔ Mitigation Measures
- ➔ Command and Control during incidents
- ➔ Multi-Agency Response Plans and Guidance
- ➔ Warning and Informing
- ➔ Community Engagement

Emergency

Definition:

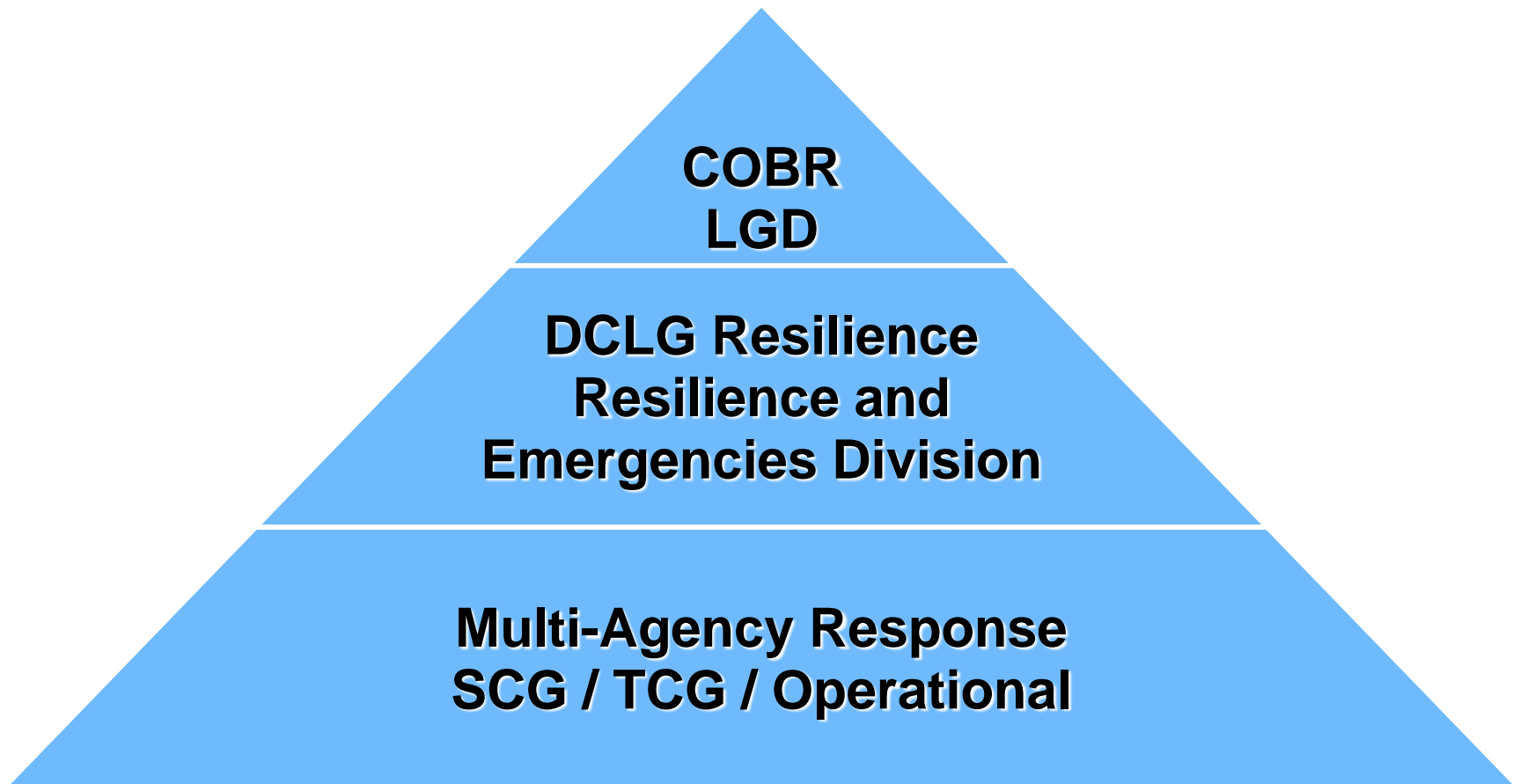
- ➔ an event or situation which threatens serious damage to human welfare;
- ➔ an event or situation which threatens serious damage to the environment; or
- ➔ war, or terrorism, which threatens serious damage to security.”

Civil Contingencies Act 2004

Civil Protection

Command Structure

Civil Protection Structure



Command And Control

The following is the nationally recognised Command and Control structure:

- | | | |
|---------------|----|--------|
| ➔ Strategic | or | Gold |
| ➔ Tactical | or | Silver |
| ➔ Operational | or | Bronze |

Command, Control and Coordination

**Command and Control
(Organisation)**

**Coordination
(Multi-Agency)**

Gold

or

Strategic (SCG)

Silver

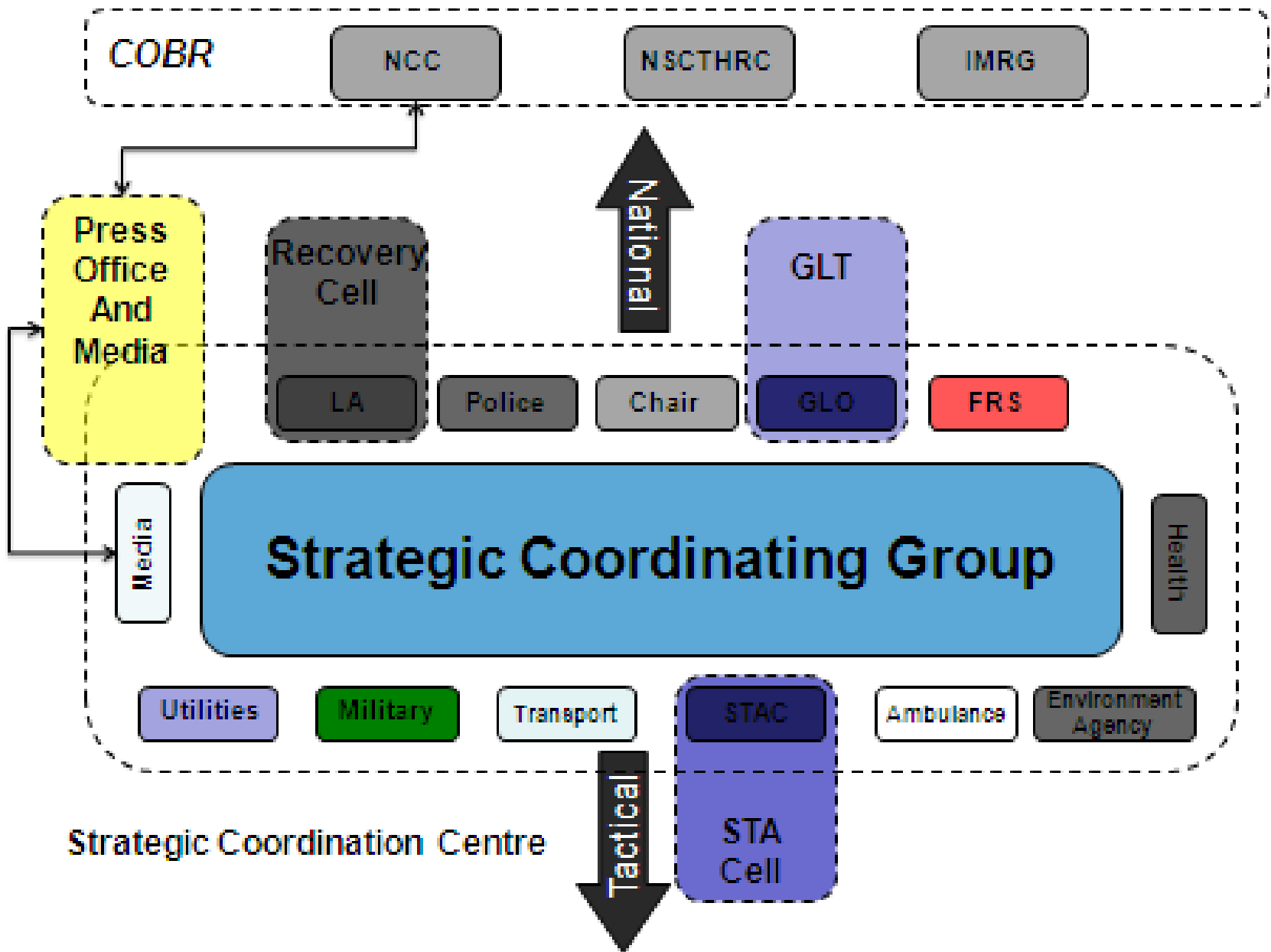
or

Tactical (TCG)

Bronze

or

Operational





QUESTIONS?

Email: sarah.comely@environment-agency.gov.uk